

Fall 10-2015

# Leading from the Center Out: The Joint Library Services Leadership Team at James Madison University

K.T. L. Vaughan

*James Madison University*, [vaughakt@jmu.edu](mailto:vaughakt@jmu.edu)

Kristen S. Shuyler

*James Madison University*

Kelly N. Miller-Martin

*James Madison University*, [millerkn@jmu.edu](mailto:millerkn@jmu.edu)

Erika Peterson

*James Madison University*

Follow this and additional works at: <http://commons.lib.jmu.edu/letfspubs>



Part of the [Business Administration, Management, and Operations Commons](#), and the [Library and Information Science Commons](#)

---

## Recommended Citation

Vaughan, K.T. L.; Shuyler, Kristen S.; Miller-Martin, Kelly N.; and Peterson, Erika, "Leading from the Center Out: The Joint Library Services Leadership Team at James Madison University" (2015). *Libraries*. Paper 58.

<http://commons.lib.jmu.edu/letfspubs/58>

This Poster is brought to you for free and open access by the Libraries & Educational Technologies at JMU Scholarly Commons. It has been accepted for inclusion in Libraries by an authorized administrator of JMU Scholarly Commons. For more information, please contact [dc\\_admin@jmu.edu](mailto:dc_admin@jmu.edu).

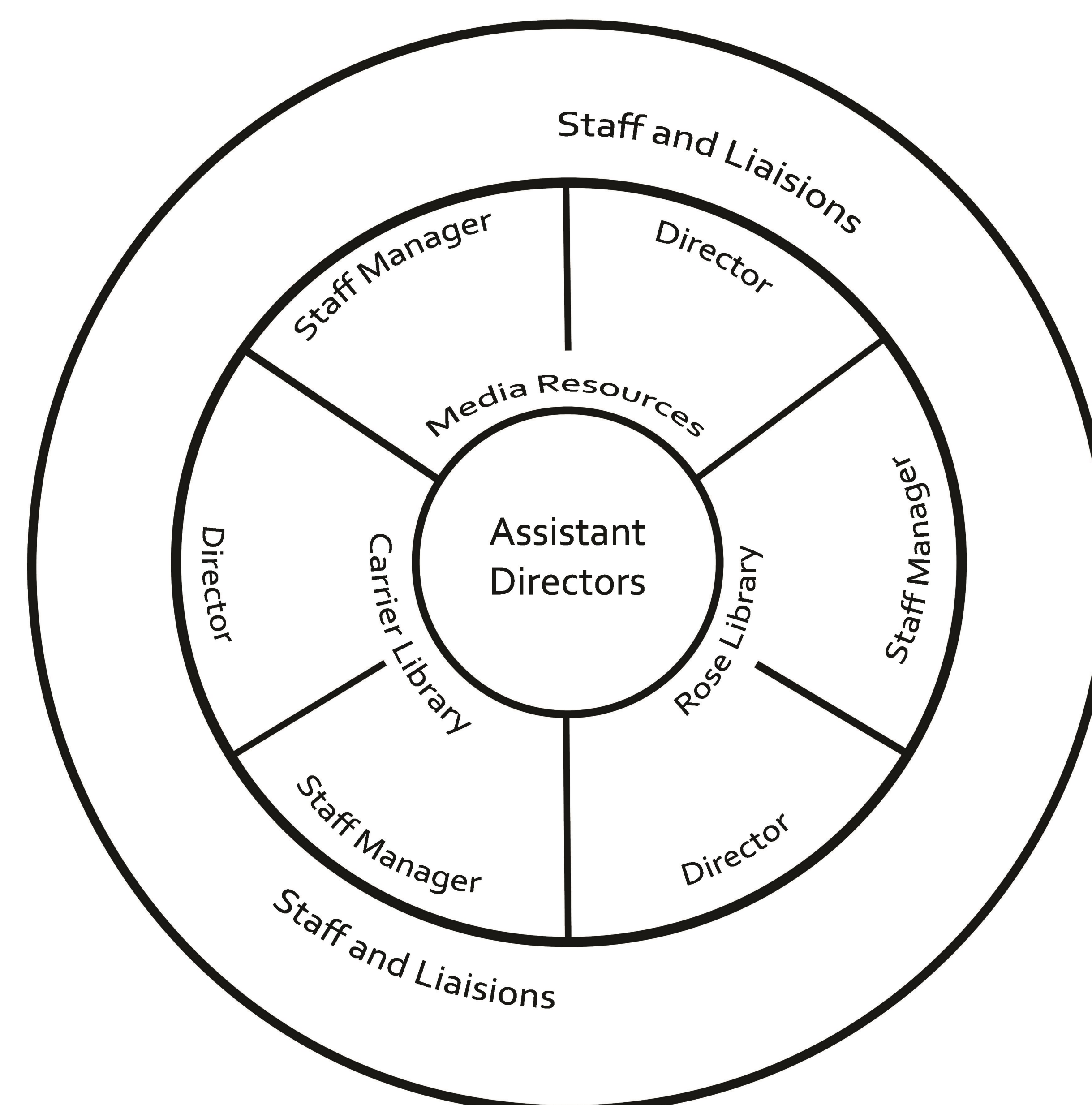
# Leading from the Center Out:

## The Joint Library Services Leadership Team at James Madison University

In a system with multiple service points, how can leadership work together to keep the library as a whole relevant and central to students?

Carrier Library	Media Resources	Rose Library
Director	Director	Director
Assistant Director		Assistant Director
Staff Manager	Staff Manager	Staff Manager
Staff	Staff	Staff
Liaisons	Liaisons	Liaisons

### Competitive Model



### Collaborative Model

